



***Y PWYLLGOR
CYNLLUNIO***

28.06.2018

***RHANBARTH Y
DWYRAIN***

**PLANNING
COMMITTEE**

28.06.2018

**AREA
EAST**



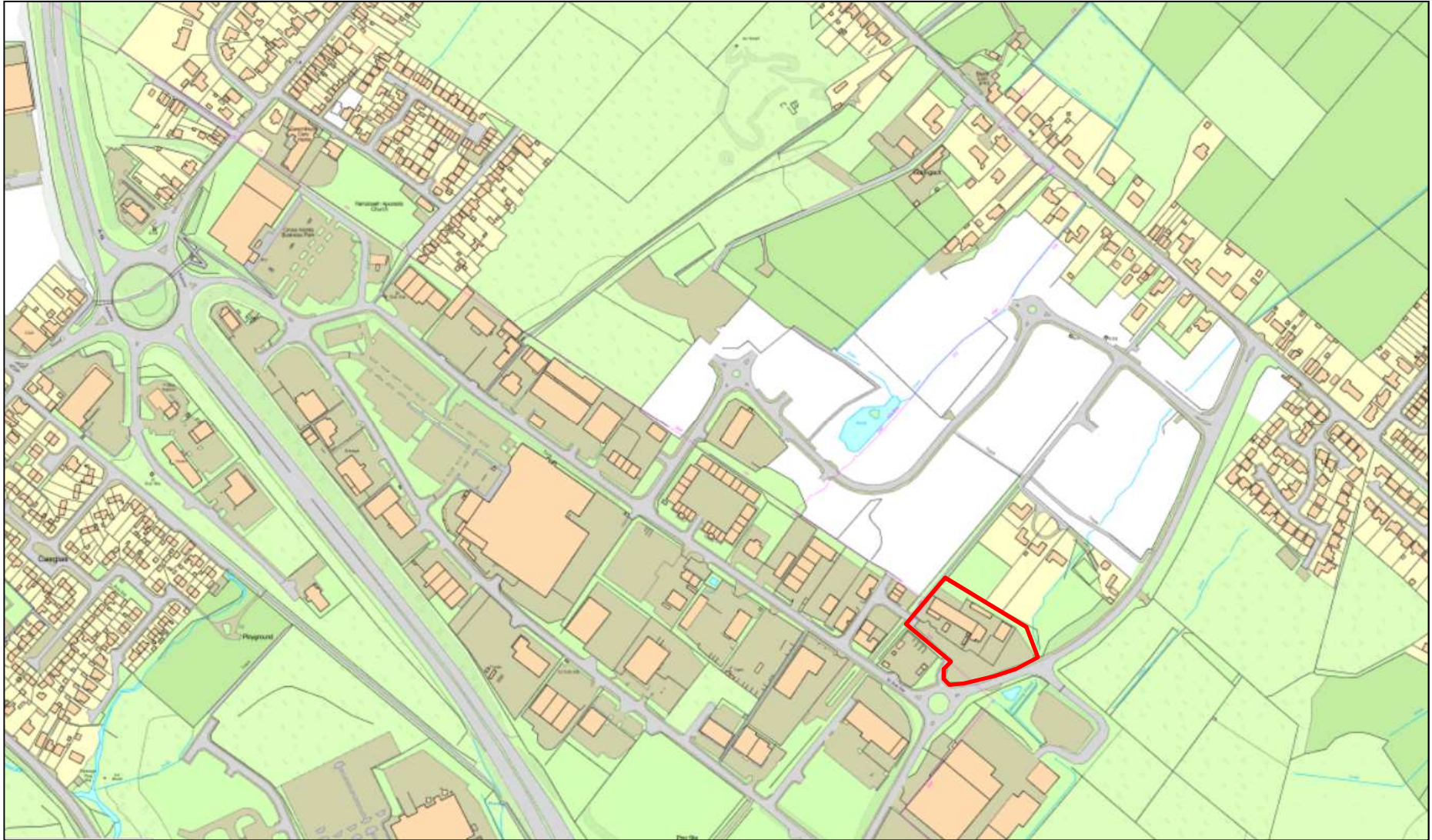
***CEISIADAU YR ARGYMHELLIR EU
BOD YN CAEL EU CYMERADWYO***

**APPLICATIONS RECOMMENDED
FOR APPROVAL**



E/35920

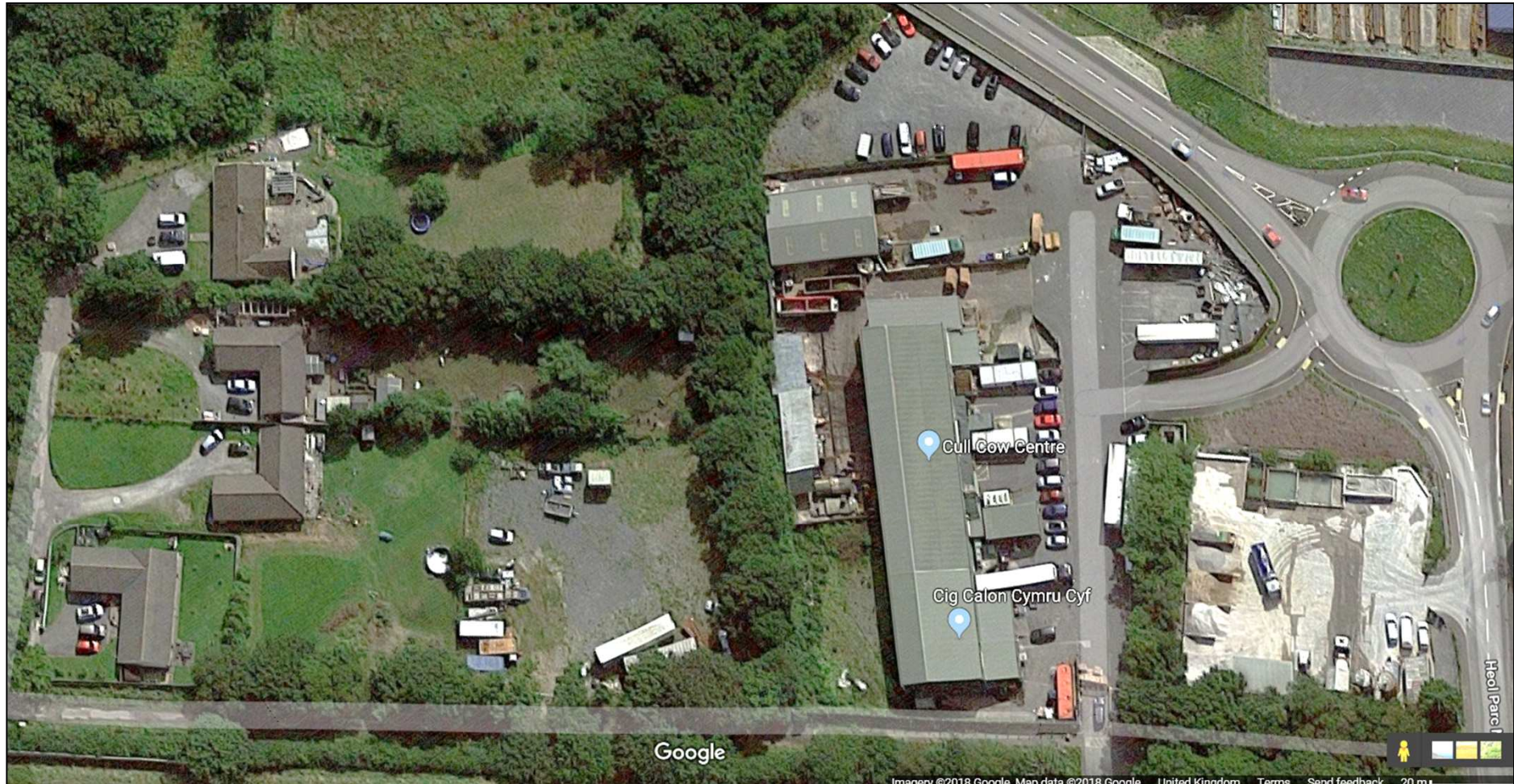
E/35920



E/35920



E/35920



E/35920



E/35920



E/35920



E/35920



E/35920



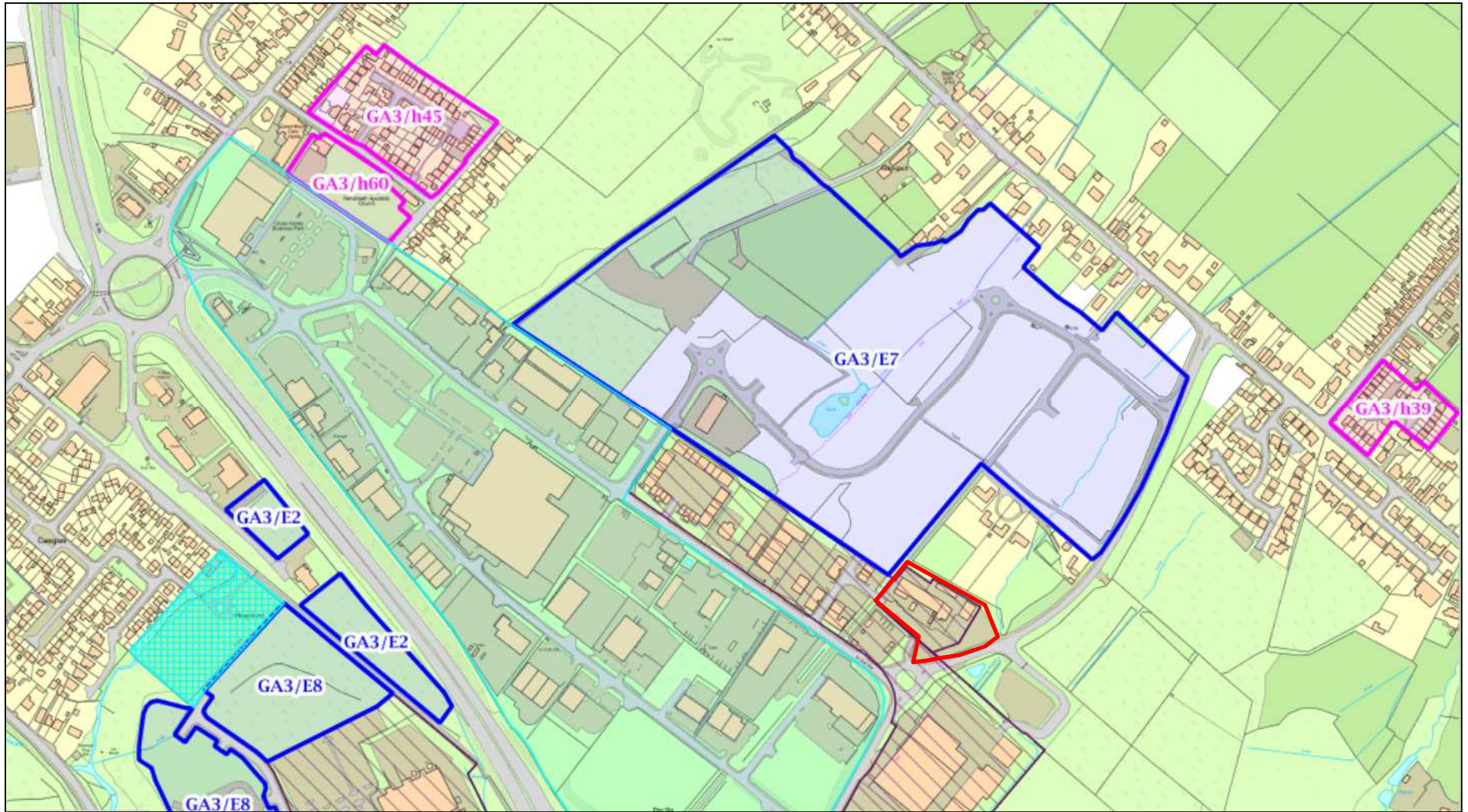
E/35920



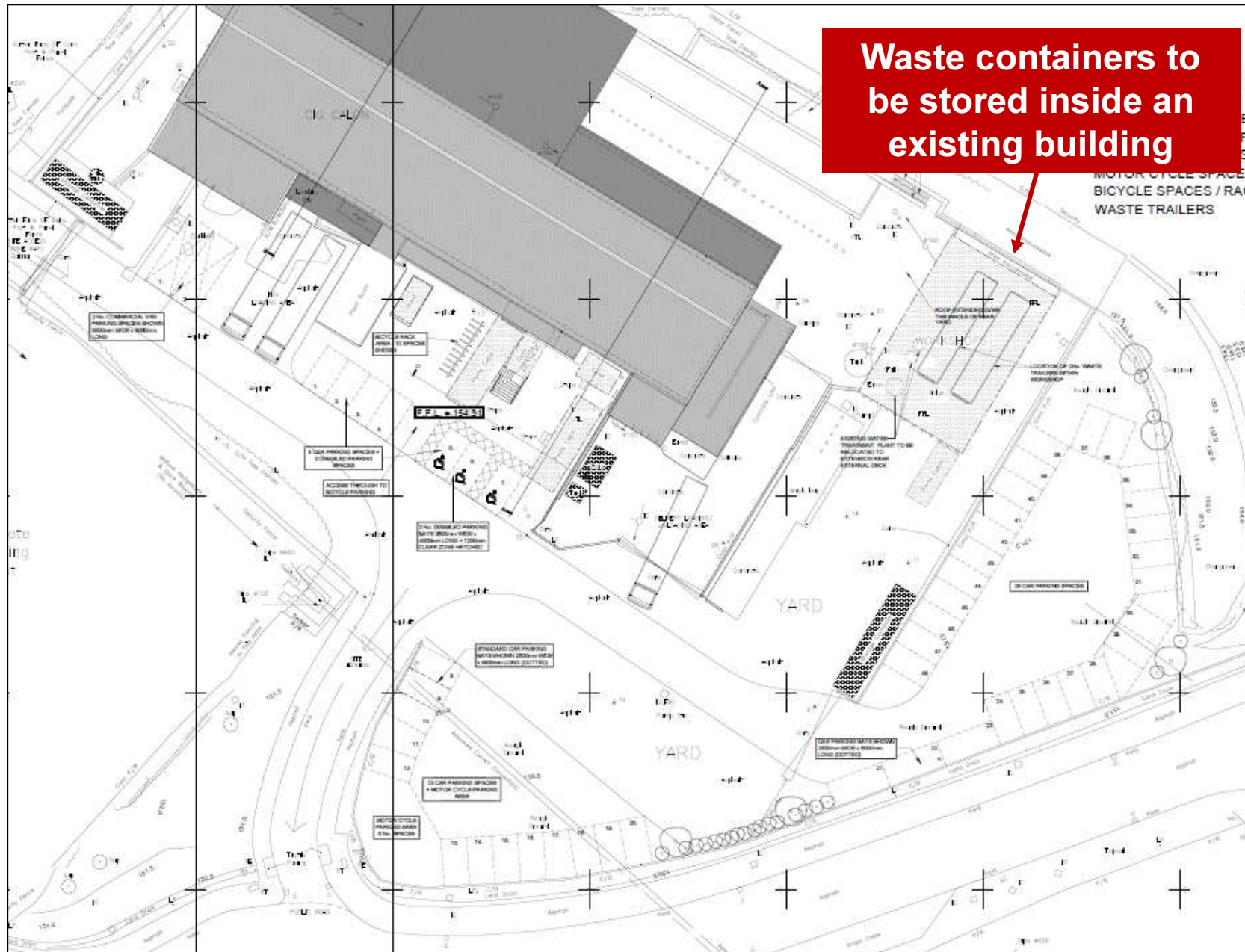
E/35920



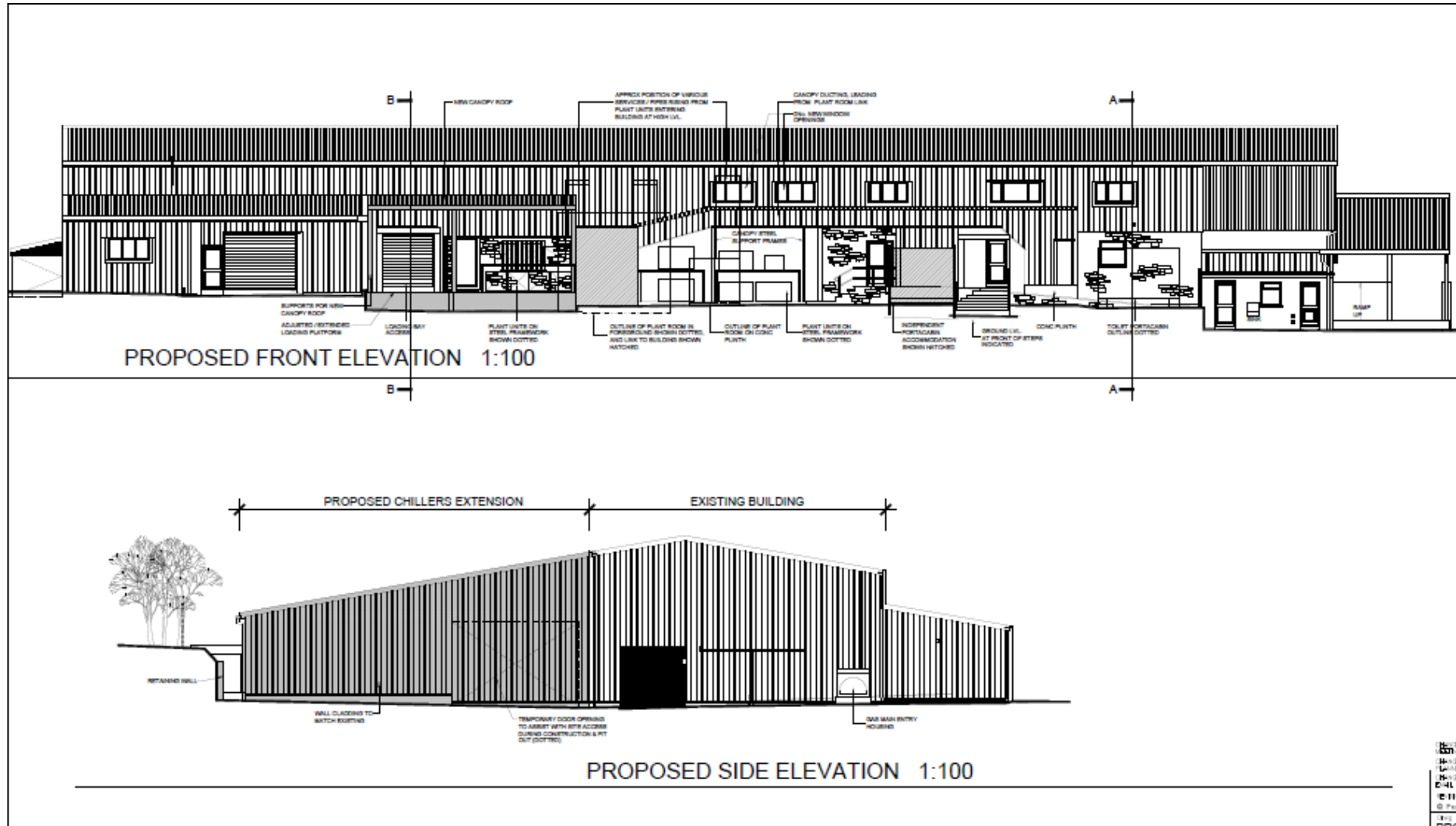
E/35920



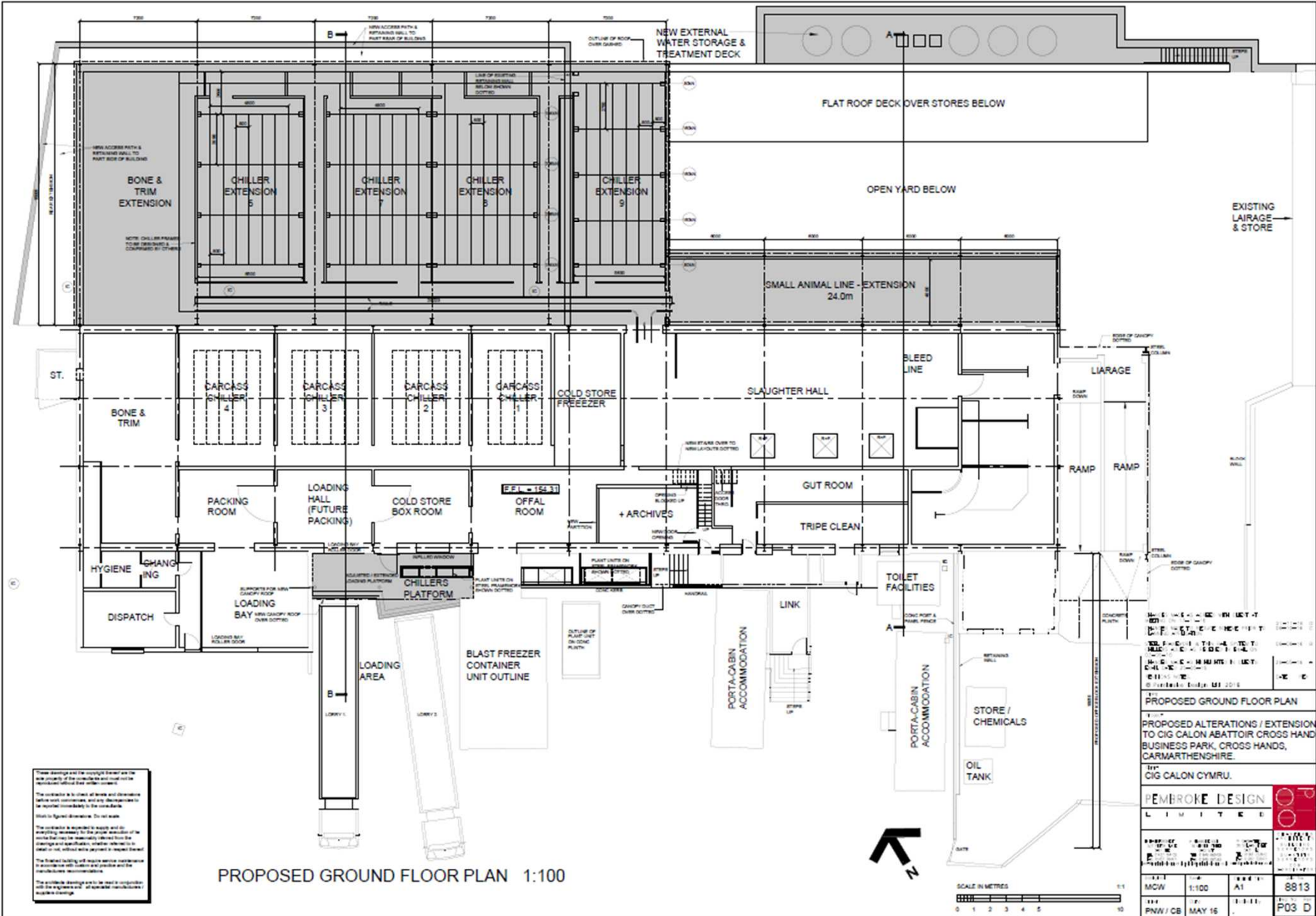
E/35920



E/35920



E/35920



These drawings and the copyright therein are the sole property of the contractor and shall not be reproduced without the written consent of the contractor.

The contractor is to check all levels and dimensions before work commences, and any discrepancies are to be reported immediately to the contractor.

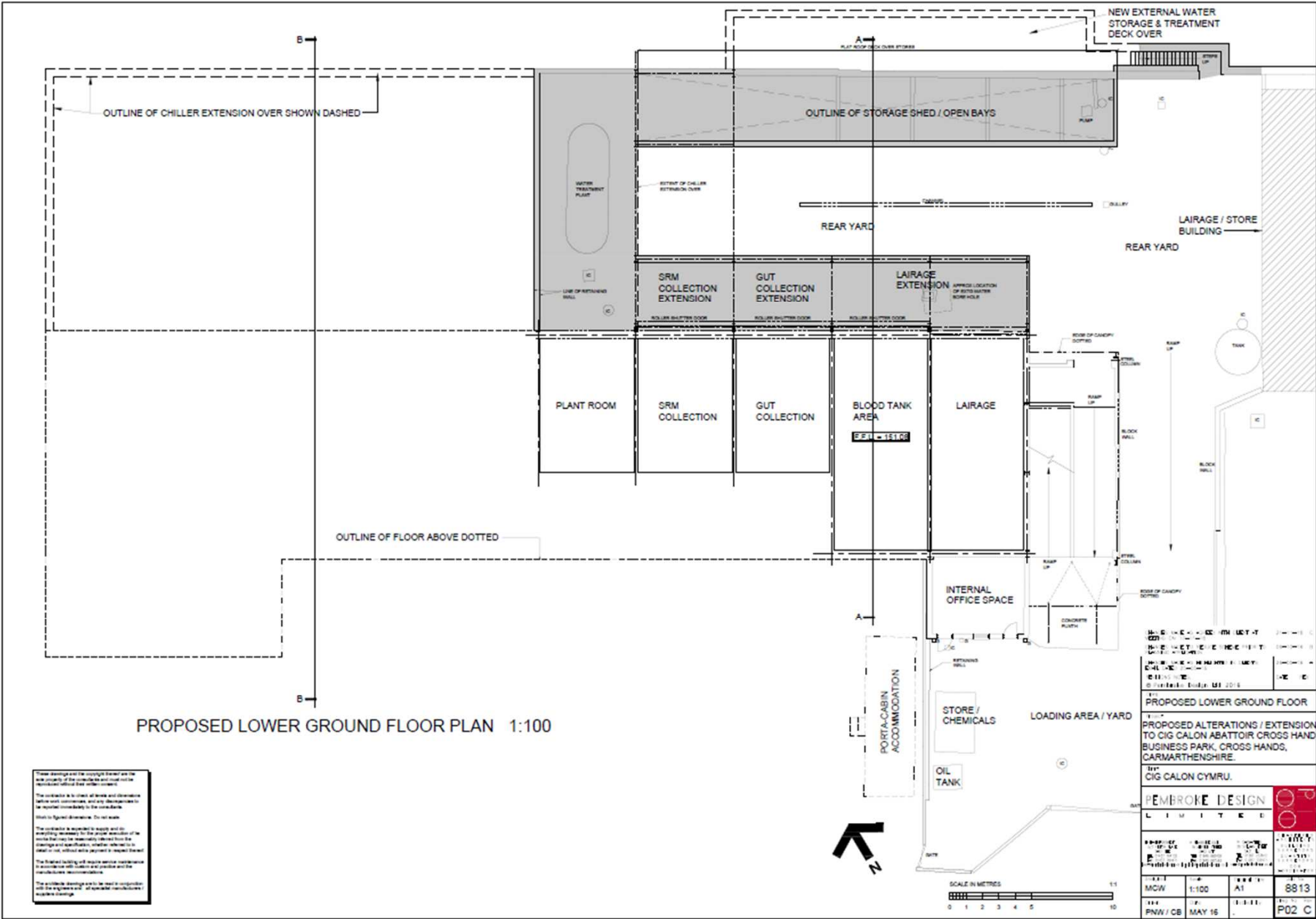
Work to be signed dimensions. Do not vary.

The contractor is to ensure that all work is completed in accordance with the approved drawings and specifications. The contractor is to ensure that all work is completed in accordance with the approved drawings and specifications. The contractor is to ensure that all work is completed in accordance with the approved drawings and specifications.

The contractor is to ensure that all work is completed in accordance with the approved drawings and specifications. The contractor is to ensure that all work is completed in accordance with the approved drawings and specifications. The contractor is to ensure that all work is completed in accordance with the approved drawings and specifications.

The contractor is to ensure that all work is completed in accordance with the approved drawings and specifications. The contractor is to ensure that all work is completed in accordance with the approved drawings and specifications. The contractor is to ensure that all work is completed in accordance with the approved drawings and specifications.

E/35920



E/35920

